



**Beaufort County**  
**Public Works**  
**Stormwater Infrastructure**  
*Project Summary*

**Project Summary:** Ball Park Road/Village Creek Outfall

**Activity:** Drainage Enhancement and Restoration

**Narrative Description of Project:**

Project improved 5,649 L.F. of drainage system. Shinn cut 5,476 L.F. of outfall ditch and workshelf. Cleaned out 173 L.F. of roadside ditch. Installed (3) access pipes, (3) access gates and rip rap for erosion control.

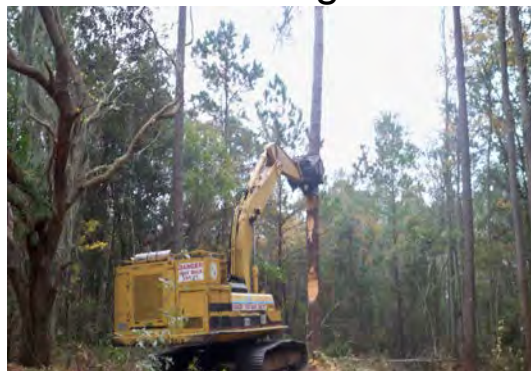
**Completion:** Dec-12

<b>2011-005 / Ball Park Road/Village Creek Outfall</b>	<b>Labor Hours</b>	<b>Labor Cost</b>	<b>Equipment Cost</b>	<b>Material Cost</b>	<b>Contractor Cost</b>	<b>Indirect Labor</b>	<b>Total Cost</b>
AGI / Access Gate - Installed	44.0	\$966.07	\$194.84	\$630.54	\$0.00	\$626.40	\$2,417.85
APINS / Access pipe - installed	70.0	\$1,530.68	\$310.40	\$1,147.06	\$0.00	\$619.06	\$3,607.20
AUDIT / Audit Project	1.5	\$31.34	\$0.00	\$0.00	\$0.00	\$19.85	\$51.18
HAUL / Hauling	63.0	\$1,373.67	\$674.10	\$764.92	\$0.00	\$881.94	\$3,694.63
NONPRO / Non-Professional Services	0.0	\$0.00	\$0.00	\$0.00	\$109.35	\$0.00	\$109.35
ODBH / Outfall ditch - bushhogged	34.0	\$773.30	\$490.43	\$412.43	\$0.00	\$519.78	\$2,195.93
ODSHN / Outfall ditch - Shinn cut	425.0	\$10,167.42	\$4,897.67	\$3,889.49	\$0.00	\$7,040.58	\$25,995.16
ONJV / Onsite Job Visit	6.0	\$191.18	\$16.08	\$20.89	\$0.00	\$150.13	\$378.28
RMTRD / Remove trees - Ditch	20.0	\$417.40	\$59.83	\$38.07	\$0.00	\$264.60	\$779.90
RSDCL / Roadside Ditch - Cleanout	42.0	\$909.14	\$201.04	\$285.99	\$0.00	\$234.04	\$1,630.21
WSGRB / Workshelf - Grubbed	121.0	\$2,826.01	\$1,648.30	\$646.71	\$0.00	\$1,930.99	\$7,052.01
WSL / Workshelf - Level	10.0	\$234.70	\$101.30	\$35.10	\$0.00	\$160.80	\$531.90
WSSHN / Workshelf - Shinn cut	20.0	\$493.40	\$162.63	\$97.23	\$0.00	\$347.20	\$1,100.46
<b>2011-005 / Ball Park Road/Village Creek Outfall Sub Total</b>	<b>856.5</b>	<b>\$19,914.31</b>	<b>\$8,756.61</b>	<b>\$7,968.42</b>	<b>\$109.35</b>	<b>\$12,795.36</b>	<b>\$49,544.05</b>
<b>Grand Total</b>	<b>856.5</b>	<b>\$19,914.31</b>	<b>\$8,756.61</b>	<b>\$7,968.42</b>	<b>\$109.35</b>	<b>\$12,795.36</b>	<b>\$49,544.05</b>

**Before**



**During**



**After**



Project: Ball Park Road - Village Creek  
Map 1

Activity: Drainage Enhancement and Restoration

Project #: 2011-005

Township: St. Helena Island

Completed: January 2013



**Legend**

**TYPE**

- River
- Creek/Stream
- River/Creek/Marsh BANK
- Channel (fka Outfall)
- Channel Pipe
- Lateral
- Lateral Pipe
- Roadside
- Roadside Pipe
- Road Pipe
- Crossline Pipe
- Driveway Pipe
- Access Pipe
- Bleeder Pipe
- Parcels



1 inch = 468 feet

Project: Ball Park Road/Village Creek Map 2

Activity: Drainage Enhancement and Restoration

Project #: 2011-005

Township: St. Helena Island

Completed: January 2013



Legend	
TYPE	
	River
	Creek/Stream
	River/Creek/Marsh BANK
	Channel (fka Outfall)
	Channel Pipe
	Lateral
	Lateral Pipe
	Roadside
	Roadside Pipe
	Road Pipe
	Road Pipe
	Crossline Pipe
	Driveway Pipe
	Access Pipe
	Bleeder Pipe
	Parcels



1 inch = 117 feet